

MJCCA9 –

ISSN 1857-5552

e-ISSN 1857-5625

Received: March 14, 2025

DOI: 10.20450/mjccce.2025.3101

Accepted: April 14, 2025

Original scientific paper

**STRUCTURALLY ENGINEERED COBALT–IRON LAYERED DOUBLE
HYDROXIDE ON METAL ORGANIC FRAMEWORK ELECTROCATALYST
FOR ENHANCED ELECTROCATALYTIC WATER SPLITTING
PERFORMANCE**

Yasir Hashmi, Jianzhi Wang, Faquan Yu*

*Key Laboratory for Green Chemical Process of Ministry of Education,
Hubei Key Laboratory for Novel Reactor and Green Chemistry Technology,
Hubei Engineering Research Center for Advanced Fine Chemicals,
School of Chemical Engineering and Pharmacy,
Wuhan Institute of Technology, Wuhan 430073, China*

fyu@wit.edu.cn

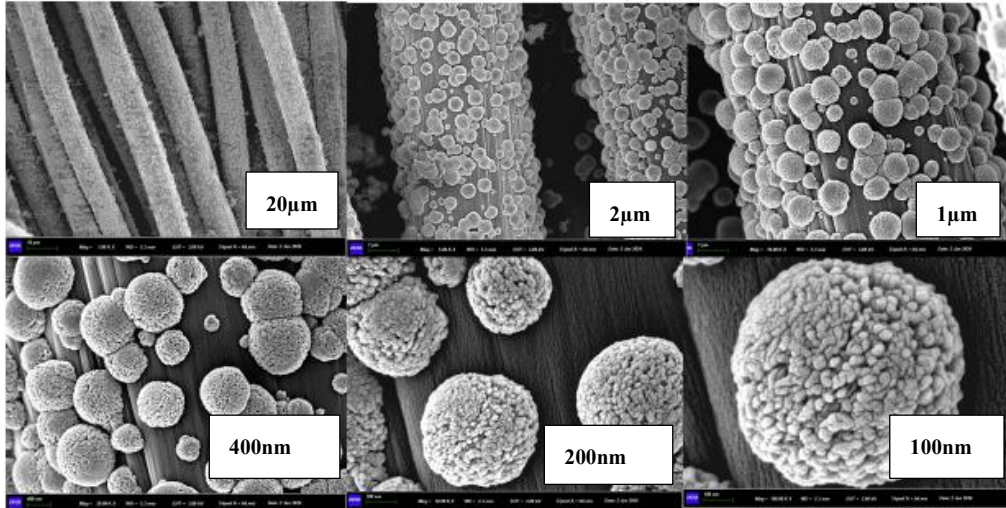


Figure S1. The SEM images of the CoFe-MOF@Co/CC at different magnifications.

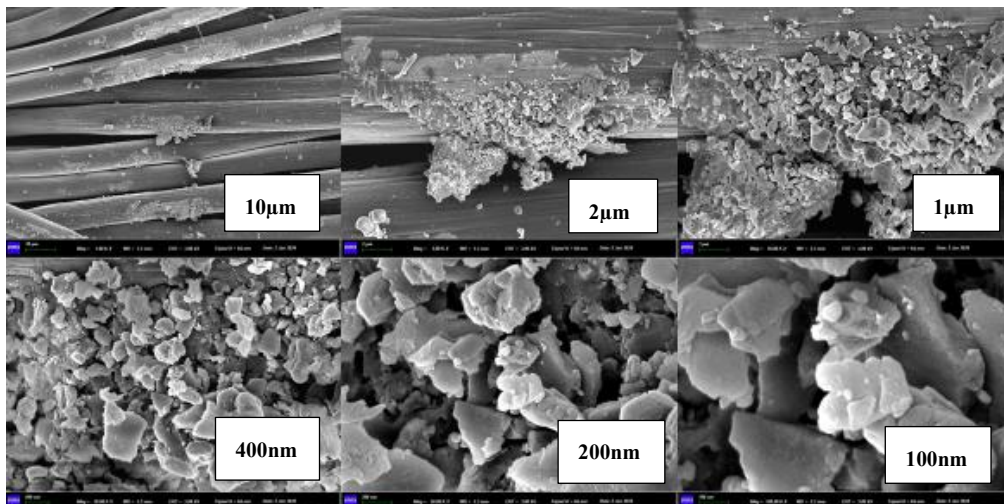


Figure S2. The SEM images of the CoFe-LDH@Co/CC at different magnifications.

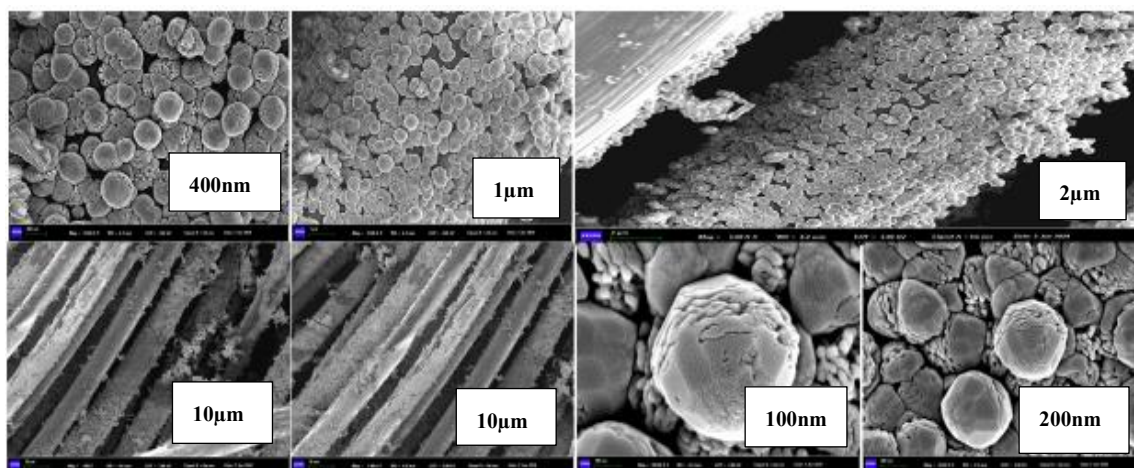


Figure S3. The SEM images of the CoFe-LDH @CoFe-MOF/CC at different magnifications.

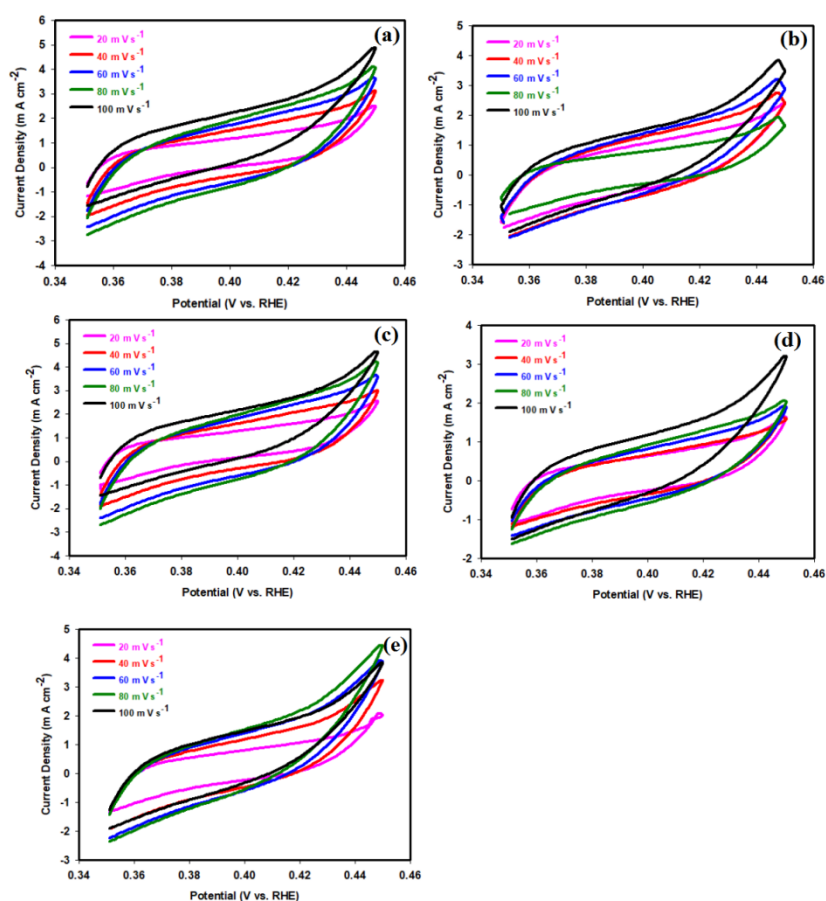


Figure S4. CV curves of (a) CoFe-MOF@/Co/CC, (b) CoFe LDH@/Co/CC, (c) CoFe-LDH CoFe-MOF/CC, (d) CoFe-LDH@CoFe-MOF@/Co/CC and (e) Co/CC electrodes at different scan rates.

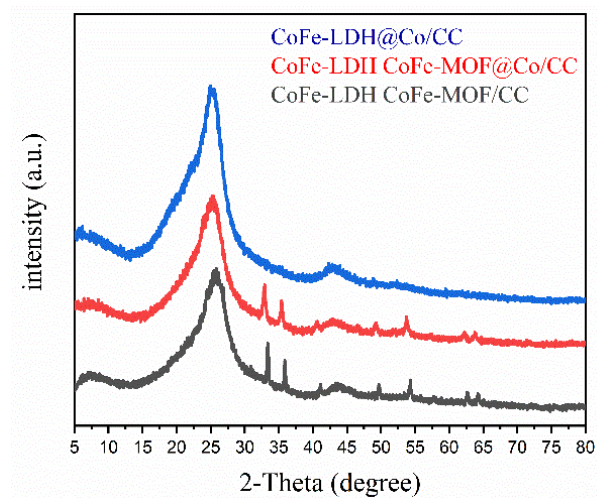


Figure S5. XRD patterns of the samples after 1000 CV cycles.

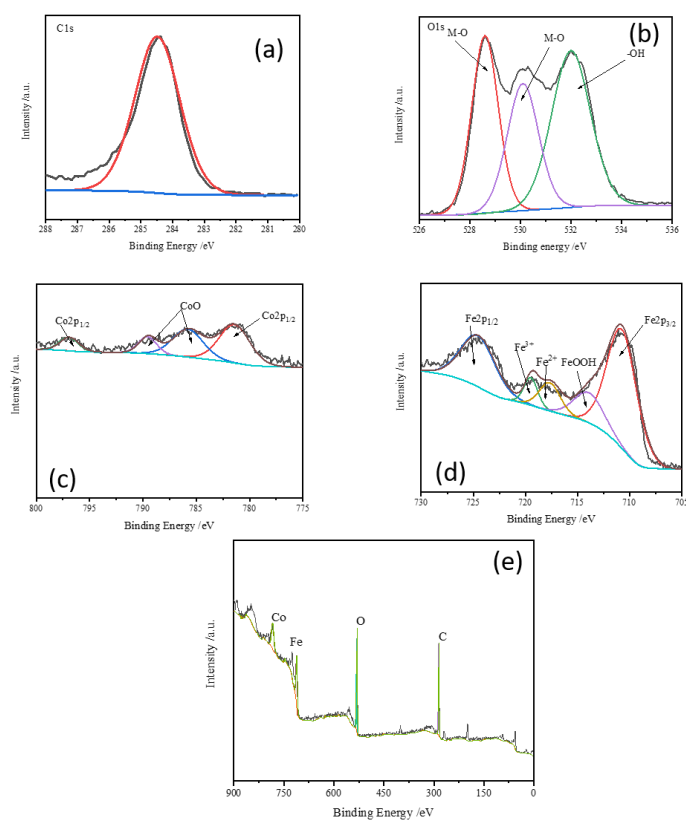


Figure S6: High-resolution XPS spectra of (a) C1s (b) O1s (c) Co 2p and (d) Fe 2p for CoFe-LDH@CoFe-MOF@Co/CC after 1000 CV cycles.