

SUPPLEMENTARY MATERIAL

LC-HRMS AND NMR STUDY OF THE ESTERIFICATION PRODUCTS OF IBUPROFEN WITH SOLKETAL: FORMATION, ISOLATION, AND IDENTIFICATION

Viktorija Jakimovska Pokupec^{1,2}, Milena Popova³, Vassya Bankova³, Marina Stefova^{1,*}

¹*Institute of Chemistry, Faculty of Natural Sciences and Mathematics,
Ss. Cyril and Methodius University in Skopje, RN Macedonia*

²*Research and Development, Alkaloid AD, Skopje, RN Macedonia*

³*Institute of Organic Chemistry with Centre of Phytochemistry,
Bulgarian Academy of Sciences, Sofia, Bulgaria*

marinaiv@pmf.ukim.mk

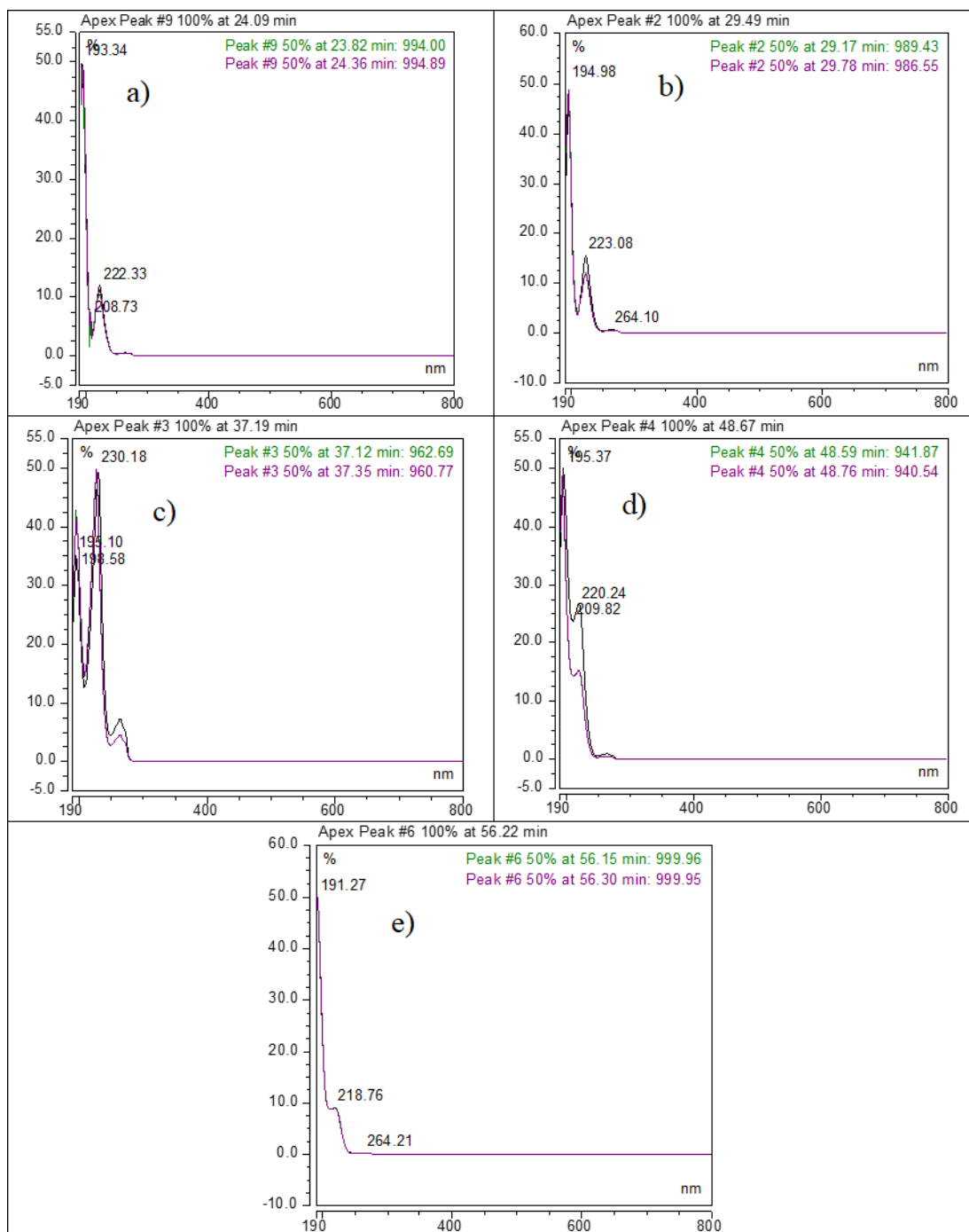


Figure S1. UV spectra of each of the components in the resulting reaction mixture with the following

RRTs:

S1a. peak with RRT ~ 0.66;

S1b. peak with RRT = 0.74 (P1);

S1c. peak of Ibuprofen;

S1d. peak with RRT = 1.32 (P2); **3e.** peak with RRT ~1.53

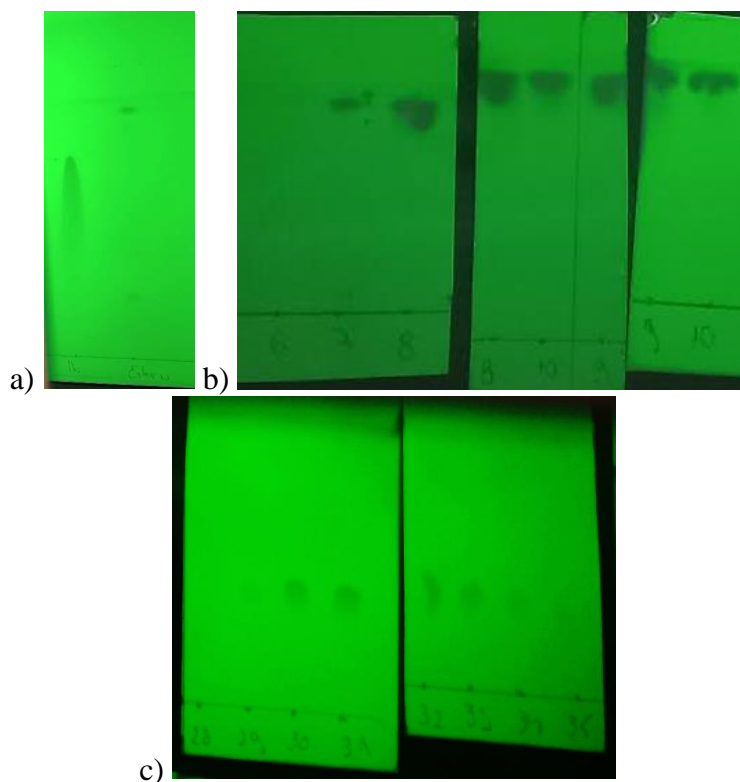
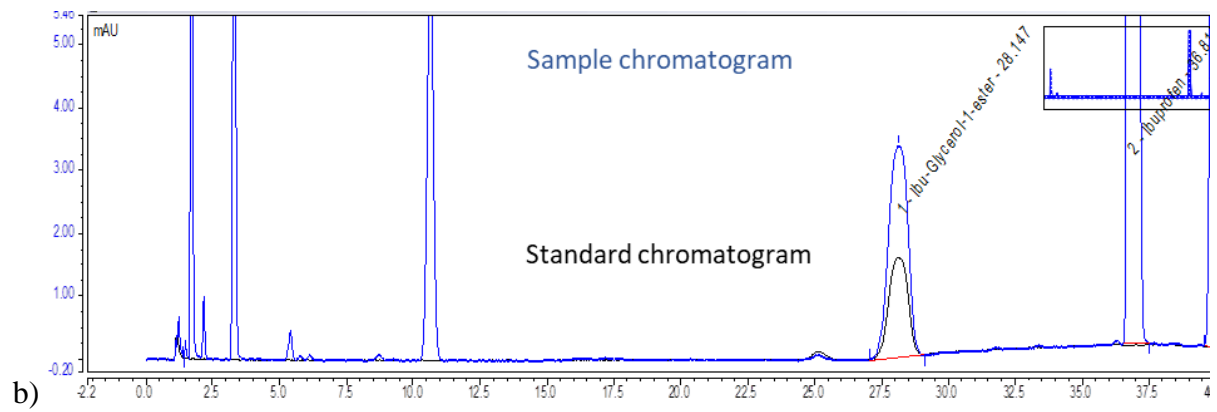


Figure S2. TLC results before and after the isolation process

- S2a.** A resulting TLC plate from extraction mixture before the isolation, alongside ibuprofen standard,
S2b. Resulting TLC plates from the application of the fractions labeled with numbers 6-10,
S2c. Resulting TLC plates from the application of the fractions labeled with numbers 29-35



a)



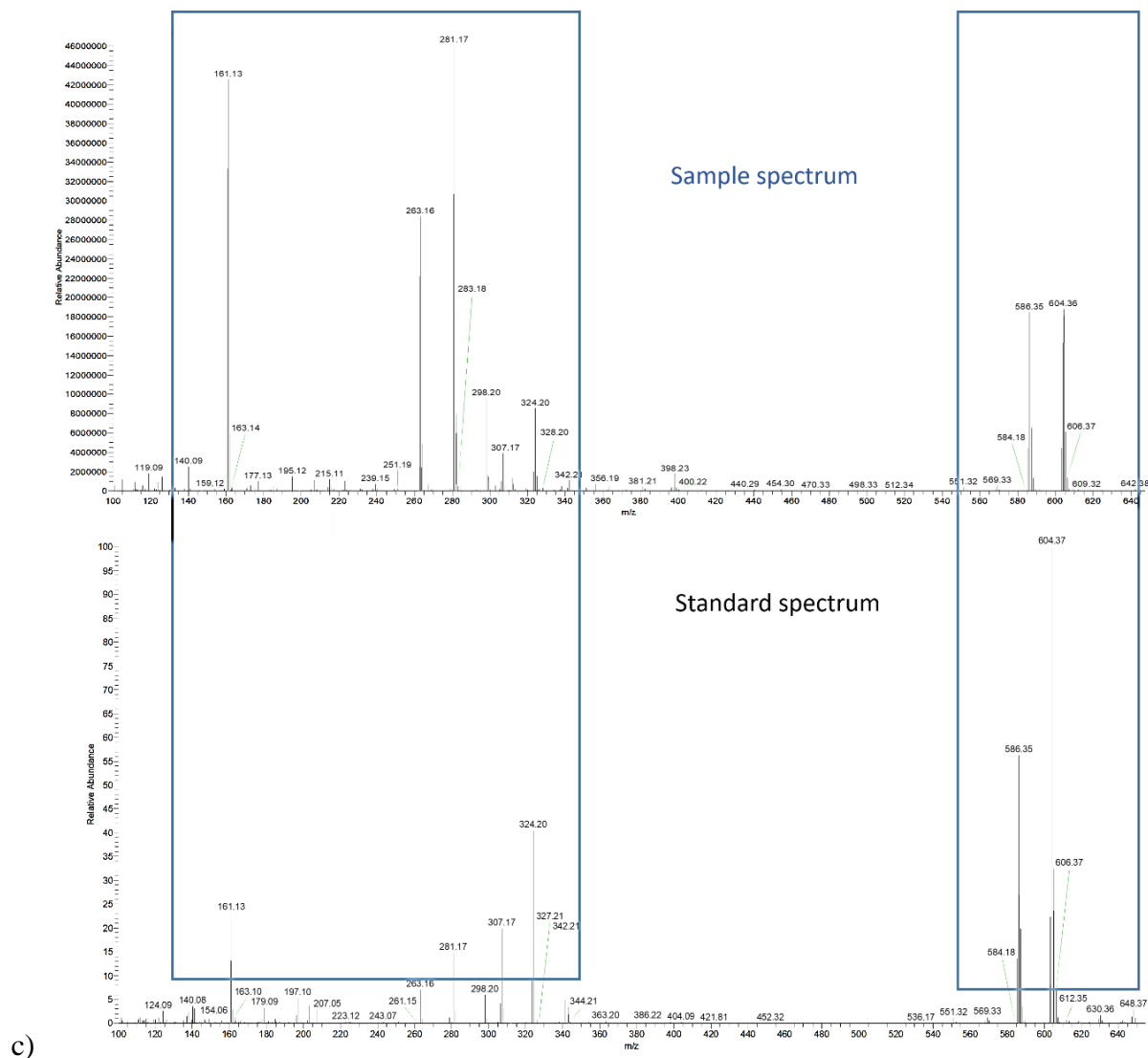
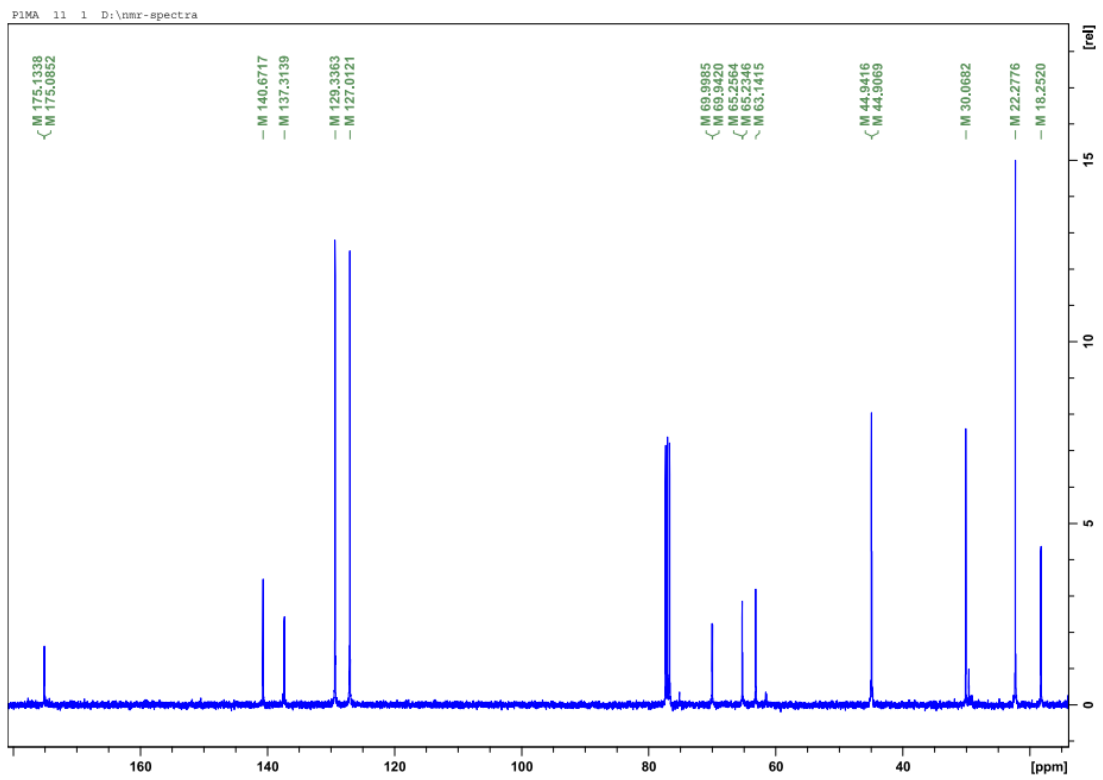
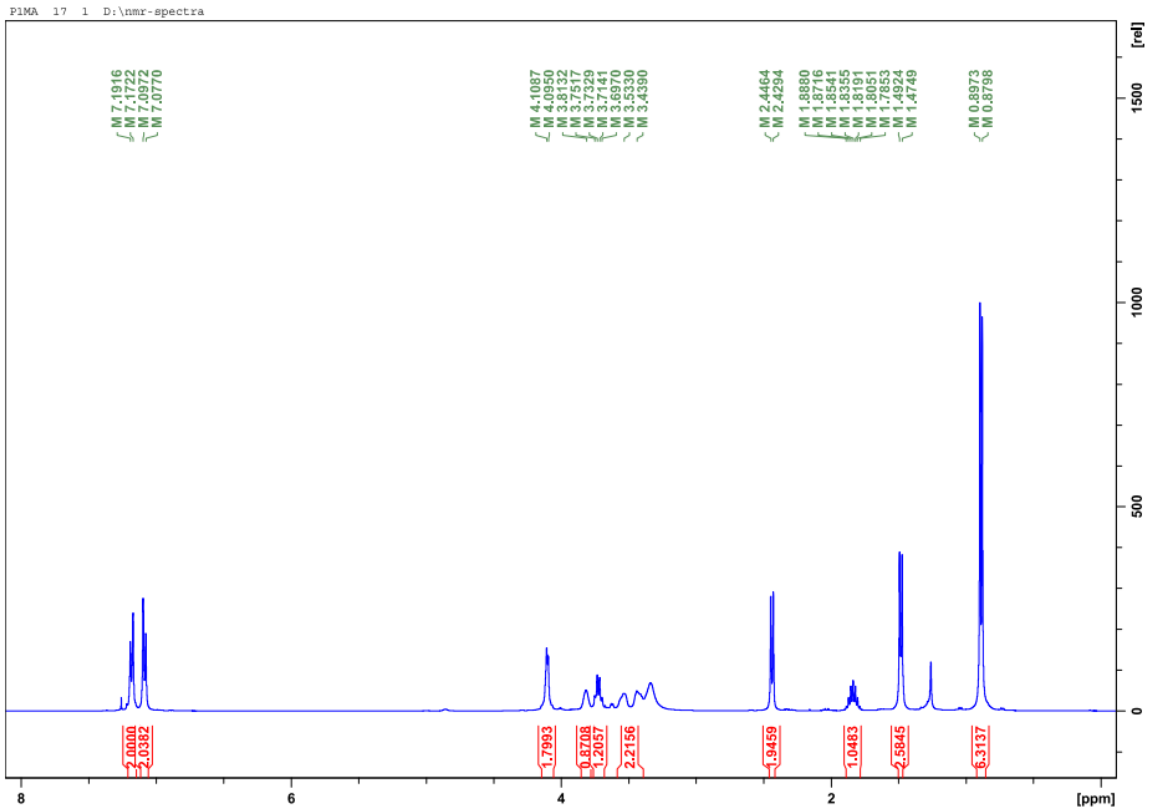
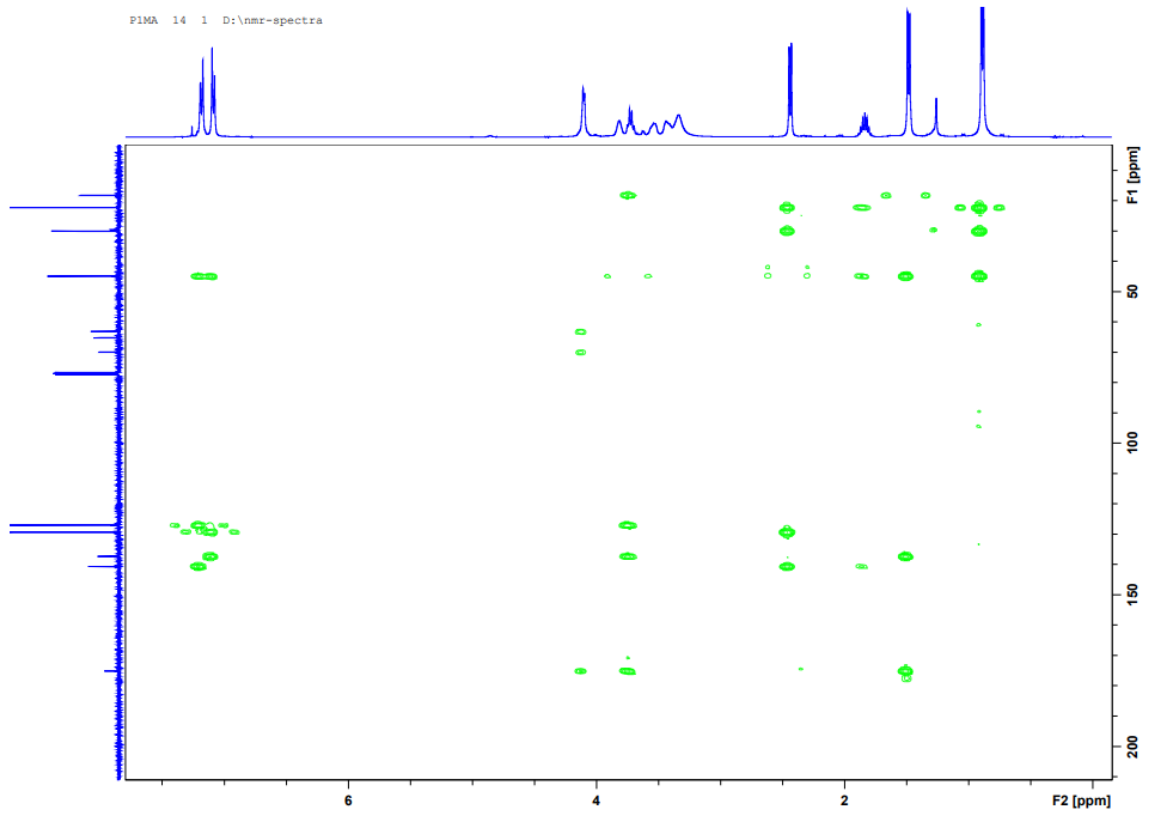
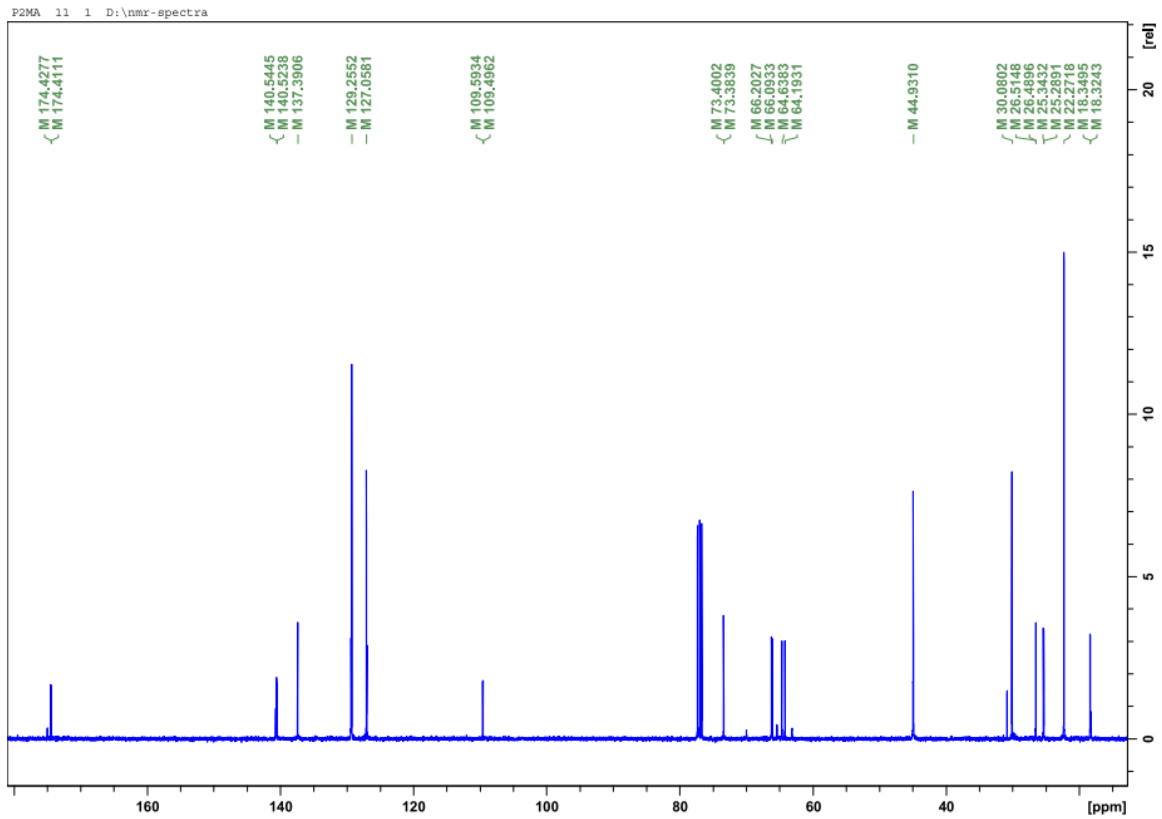
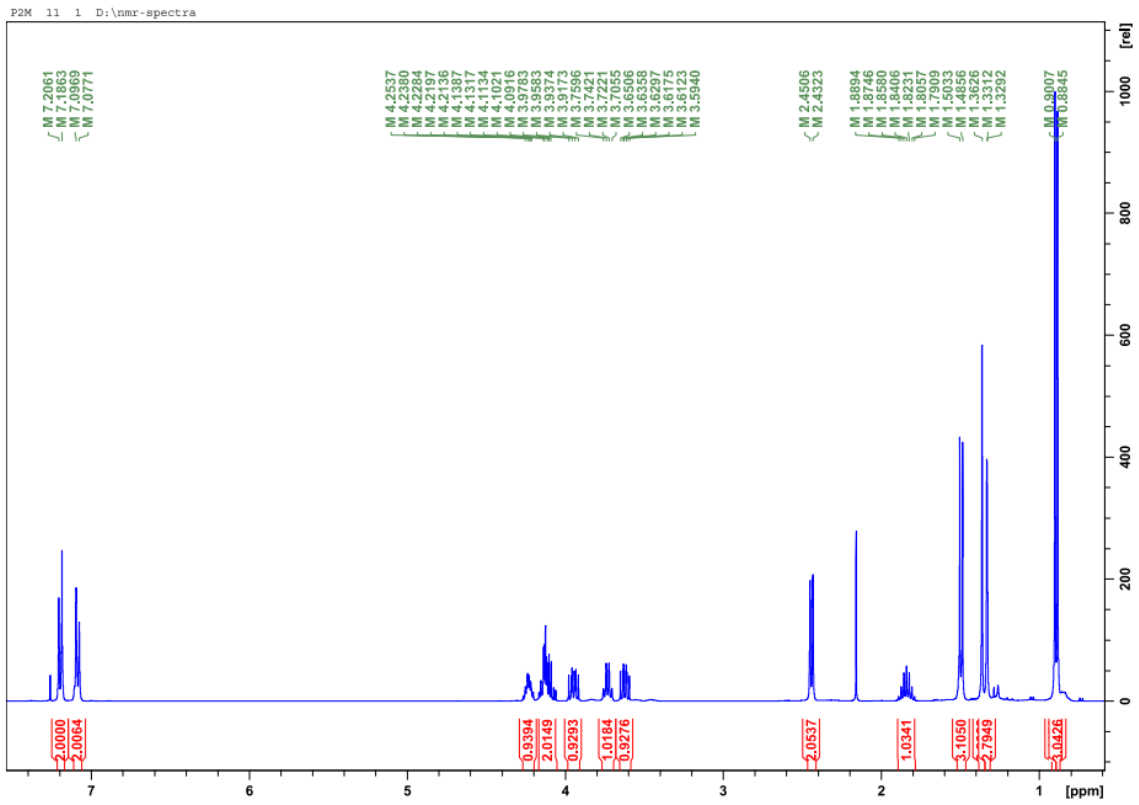


Figure S3. Analysis of reference standard of glycerol mono-ester **S2a.** Resulting TLC plate from extraction mixture before the isolation, alongside a standard of ibuprofen-glycerol ester; **S2b.** HPLC chromatograms at 265 nm; **S2c.** MS spectra







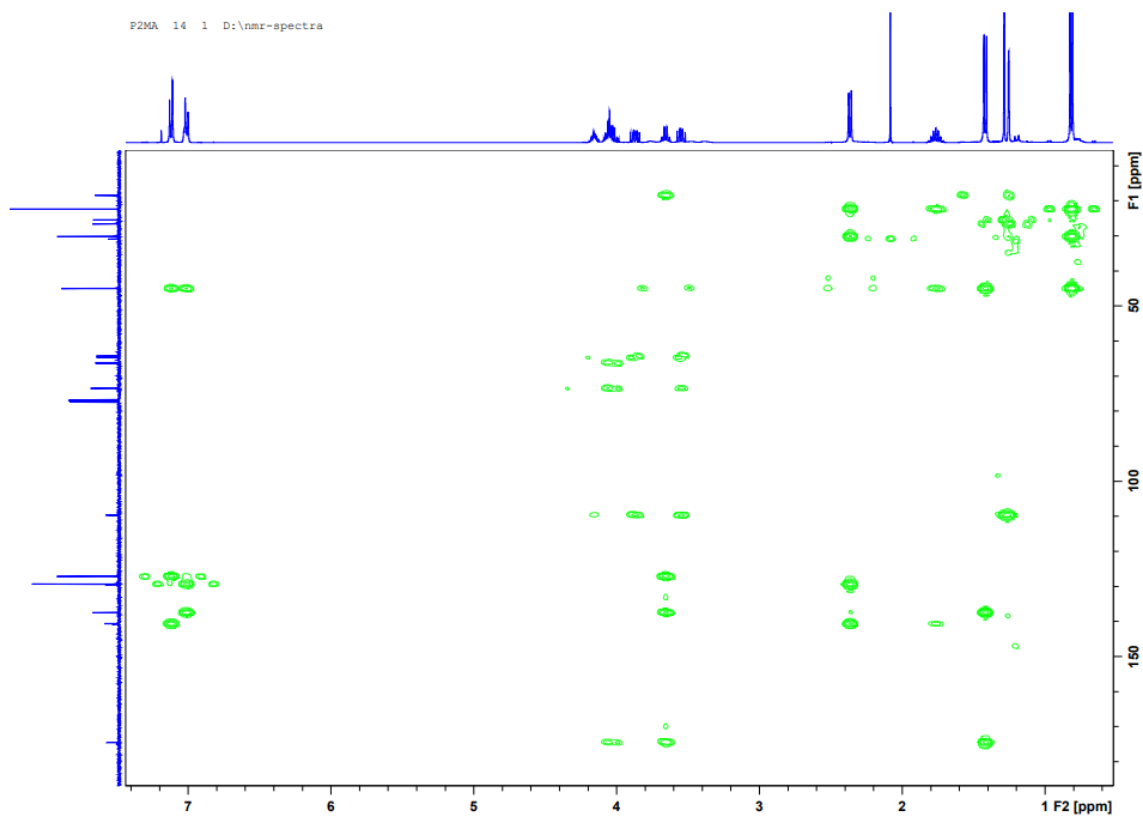


Figure S4. ^1H and ^{13}C NMR spectra of isolated products P1 and P2:

S4a. ^1H NMR spectra of P1

S4b. ^{13}C NMR spectra of P1

S4c. HMBC 2D NMR spectra of P1

S4d. ^1H NMR spectra of P2

S4e. ^{13}C NMR spectra of P2

S4f. HMBC 2D NMR spectra of P2